

# Kittitas County COMPAS Map



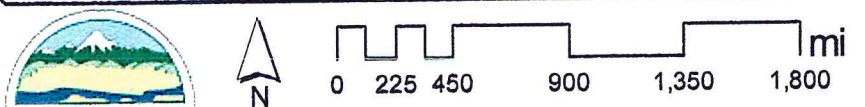
Date: 1/29/2014

1 inch = 752 feet  
Relative Scale 1:9,028

**Disclaimer:**  
Kittitas County makes every effort to produce and publish the most current and accurate information possible. No warranties, expressed or implied, are provided for the data, its use, or its interpretation. Kittitas County does not guarantee the accuracy of the material contained herein and is not responsible for any use, misuse or representations by others regarding this information or its derivatives.

*Floodway  
flood plain*

RECEIVED  
FEB 04 2014  
KITITAS COUNTY  
CDS





# Kittitas County COMPAS Map

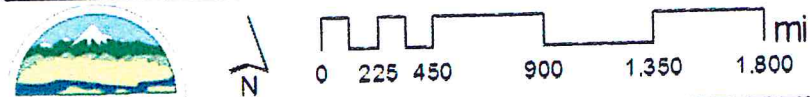


1 inch = 752 feet  
Relative Scale 1:9,028

Date: 1/29/2014

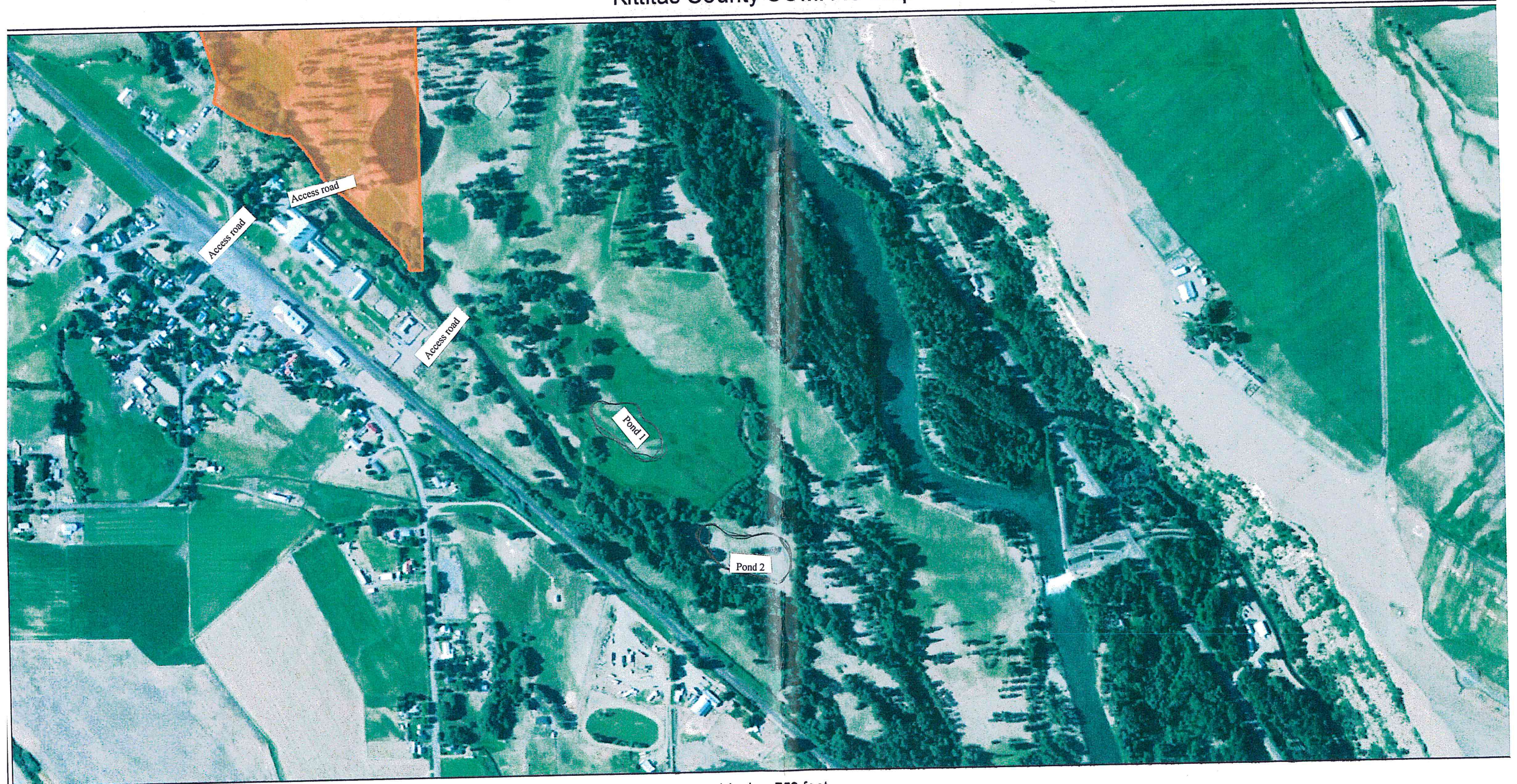
*Disclaimer:*  
Kittitas County makes every effort to produce and publish the most current and accurate information possible. No warranties, expressed or implied, are provided for the data, its use, or its interpretation. Kittitas County does not guarantee the accuracy of the material contained herein and is not responsible for any use, misuse or representations by others regarding this information or its derivatives.

Wet lands





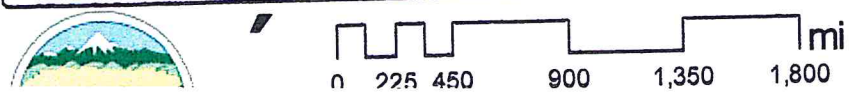
# Kittitas County COMPAS Map



1 inch = 752 feet  
Relative Scale 1:9,028

Date: 1/29/2014

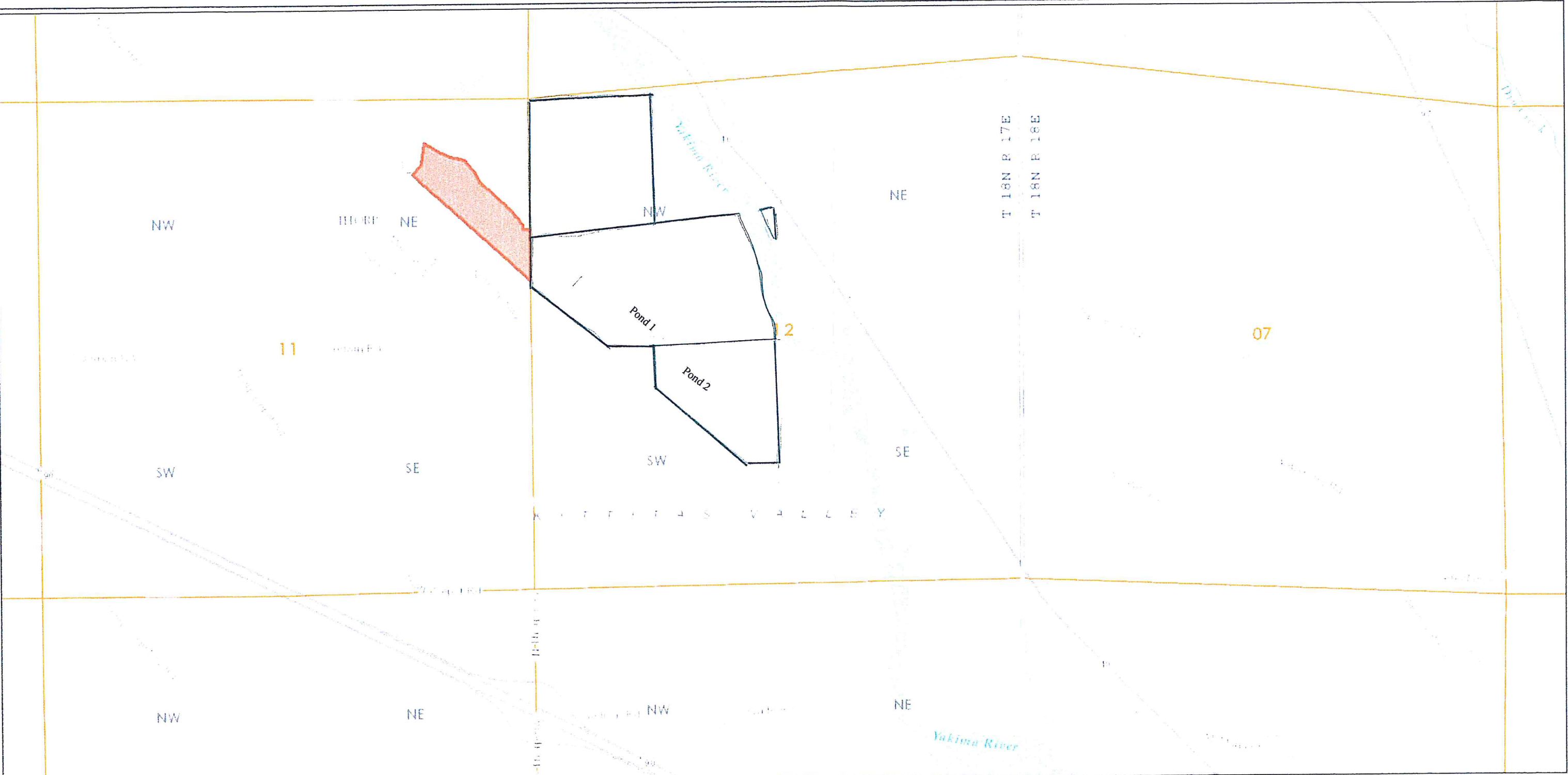
**Disclaimer:**  
Kittitas County makes every effort to produce and publish the most current and accurate information possible. No warranties, expressed or implied, are provided for the data, its use, or its interpretation. Kittitas County does not guarantee the accuracy of the material contained herein and is not responsible for any use, misuse or representations by others regarding this information or its derivatives.



RECEIVED  
FEB 04 2014  
KITITAS COUNTY  
CDS



# GT Ranch Properties

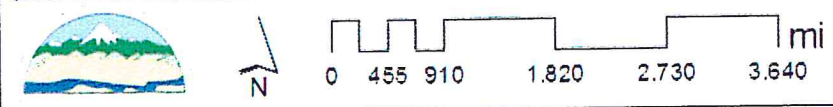


Date: 1/31/2014

1 inch = 1,505 feet  
Relative Scale 1:18,056

**Disclaimer:**  
Kittitas County makes every effort to produce and publish the most current and accurate information possible. No warranties, expressed or implied, are provided for the data, its use, or its interpretation. Kittitas County does not guarantee the accuracy of the material contained herein and is not responsible for any use, misuse or representations by others regarding this information or its derivatives.

*Outlined properties affected by Conditional Use Permit*

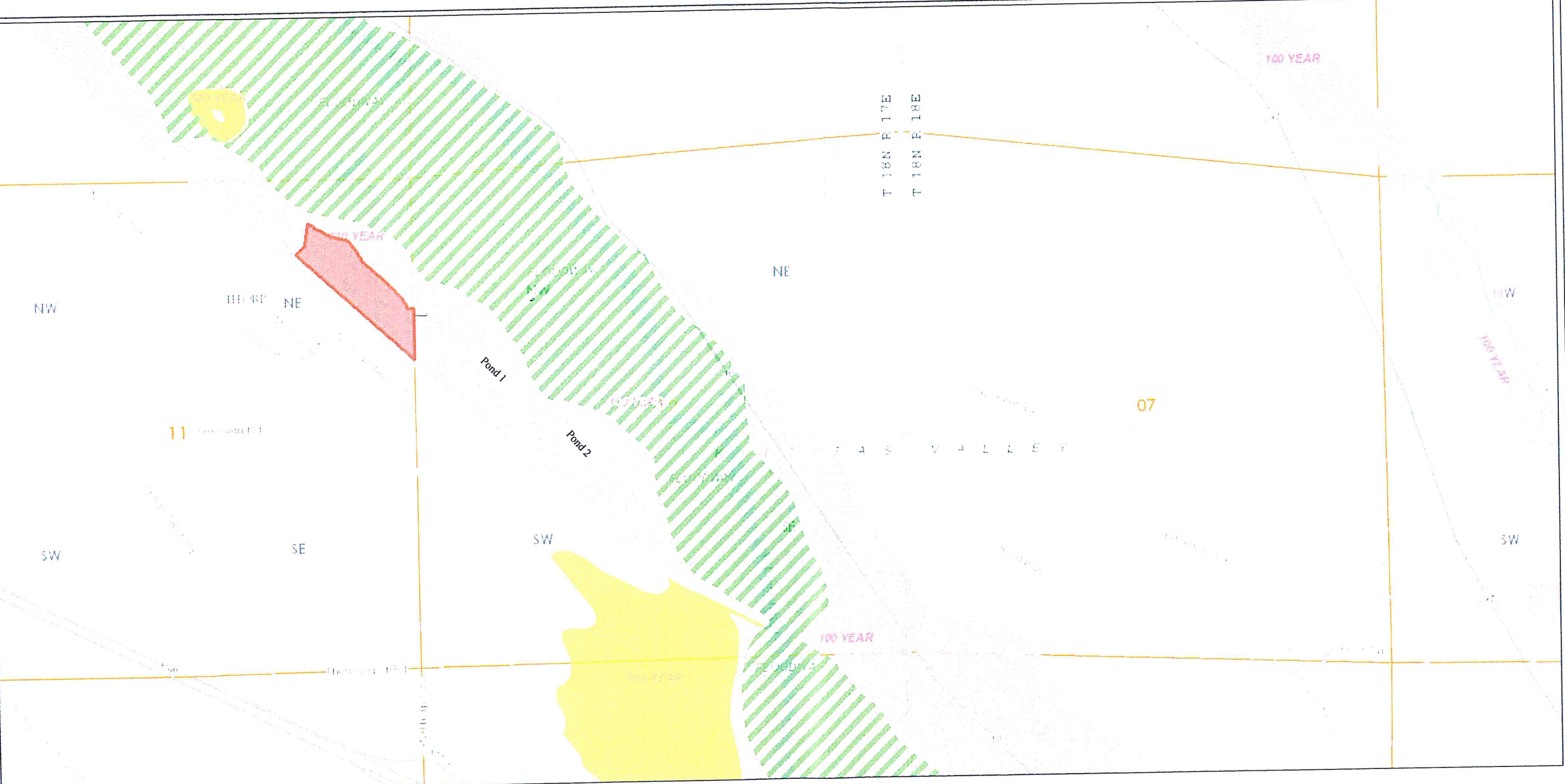


**RECEIVED**  
FEB 04 2014  
KITITAS COUNTY  
CDS



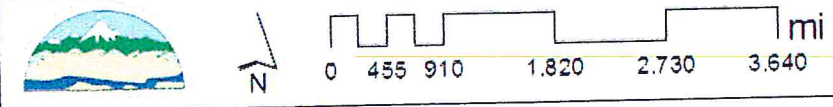


# GT Ranch Floodway and Floodplain



Date: 1/31/2014

**Disclaimer.**  
 Kittitas County makes every effort to produce and publish the most current and accurate information possible. No warranties, expressed or implied, are provided for the data, its use, or its interpretation. Kittitas County does not guarantee the accuracy of the material contained herein and is not responsible for any use, misuse or representations by others regarding this information or its derivatives.



**RECEIVED**  
 FEB 04 2014  
 KITITAS COUNTY  
 GDS